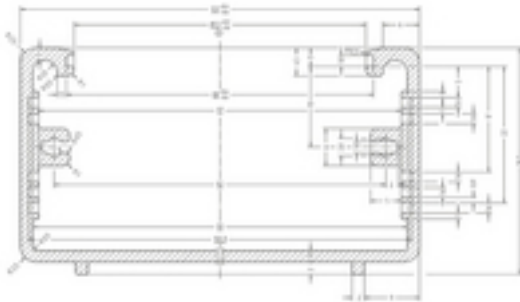


## AH-102/SW - Alu Utility Case/Black



### Utility Cases

- Extruded u-shaped profile with insertion grooves for printed circuits
- Exchangeable front panel with protective foil, 1.5 mm aluminium sheet metal
- Mat black ABS plastic side covers
- Material surface: black
- Total height: 36.5 mm

## Technical data:

Intended use	: case
Material	: aluminium sheet, ABS plastic, black
Dimensions	: 103 x 36.5 x 167 mm
Width	: 103 mm
Height	: 36.5 mm
Length	: 167 mm
PCB dimensions	: 100 x 160 mm
Weight	: 248 g